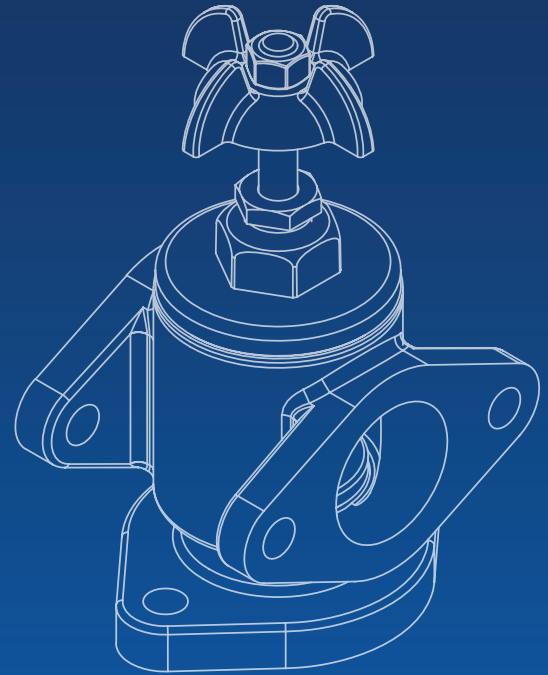
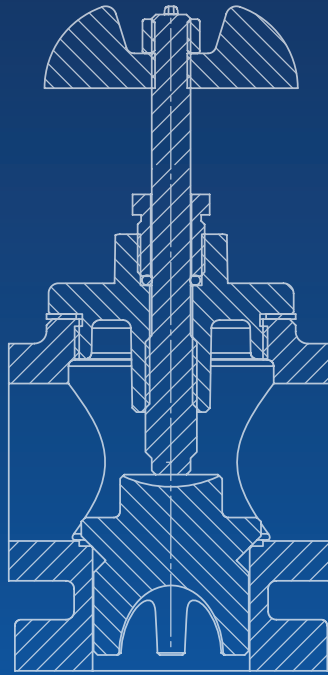
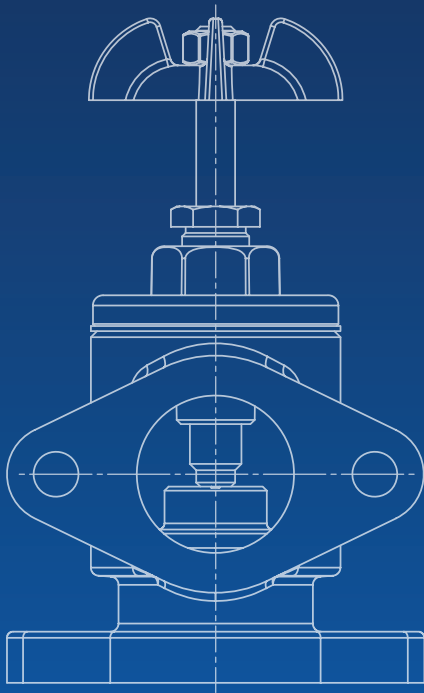


Dependable Bilge valves for Harsh Marine environments ...



# Stewart & Longbottom Marine Valves

Manufactured in New Zealand by White Star Products



Photo: Kokomo, by Chris Lewis, courtesy of Alloy Yachts

**a comprehensive range of marine valves that have been used for many years on surveyed vessels, large pleasure yachts, charter launches and fishing fleets ...**



Stewart and Longbottom Valves are typically used in conjunction with engine driven bilge pumping and fire fighting systems for added safety.

These quality marine valves are manufactured in New Zealand using bronze and stainless steel construction and are available with a range of bronze mating flanges.

Chosen by Alloy Yachts, Fitzroy Yachts, Salthouse Marine, Diverse Projects, and many other luxury Yacht manufacturers for their rugged time proven design and serviceability at sea. The bolt together modular design means they are easily adapted and virtually future proof.

## Specs

- Bodies, Covers, Poppets and Tapered Plugs are cast LG2 bronze
- All Spindles are machined Tobin Bronze with Nitrile Rubber O-Ring. (can be made in 316 stainless steel on request)
- Cover Studs & Nuts are all 316 Stainless Steel or can be specified as Alloy 385 brass on request

### 40mm Bilge Chest Manifold Screw Down Non-Return Valve

Any number of valves with a hollow plug cock at one end to switch from sea suction for firefighting to bilge suction. Blanked off end available for manual bilge pumping.

### 50mm Bilge Chest Manifold Screw Down Non-Return Valve

Any number of valves with a hollow plug cock at one end to switch from sea suction for firefighting to bilge suction. Blanked off end available for manual bilge pumping.



## 40mm Hollow Plug Cock Valve

Sea and bilge suction and overboard/firehose discharge. Can also be used as a seacock.

40mm Gardner Flange

Weight 4.7 kg  
Dimensions 180 x 120 mm

**SL40-HPCV**



## 50mm Hollow Plug Cock Valve

Sea and bilge suction and overboard/firehose discharge. Can also be used as a seacock.

50mm T.E. Flange

Weight 14 kg  
Dimensions 175 x 245 mm

**SL50-HPCV**



## 40mm Screw Down Non-Return Valve

For bilge chest assembly. Compact valve design includes non return feature.

40mm Gardner Flange

Weight 2.3 kg  
Dimensions 160 x 100 mm

**SL40-SDNV**



## 50mm Screw Down Non-Return Valve

For bilge chest assembly. Compact valve design includes non return feature.

50mm T.E. Flange

Weight 9.7 kg  
Dimensions 180 x 250 mm

**SL50-SDNV**



## 40mm Overboard Discharge Screw Down Non-Return Valve

Overboard discharge valve. Internal construction is the same as a screw down non-return valve.

40mm T.E. Flange

Weight 5.8 kg  
Dimensions 170 x 195 mm

**SL40-OSDNV**



## 50mm Overboard Discharge Screw Down Non-Return Valve

Overboard discharge valve. Internal construction is the same as a screw down non-return valve.

50mm T.E. Flange

Weight 7.7 kg  
Dimensions 170 x 250 mm

**SL50-OSDNV**



## 40mm Quick Acting Valve

Spring loaded closed. Used to drain collision bulkheads. Alloy 464 brass T Bar, 316 SS return spring & spindle to poppet split pin.

40mm Gardner Flange

Weight 2.3 kg  
Dimensions 155 x 100 mm

**SL40-QSDNV**



## 50mm In-Line Screw Down Non-Return Valve

For bilge chest assembly. Compact valve design includes non return feature.

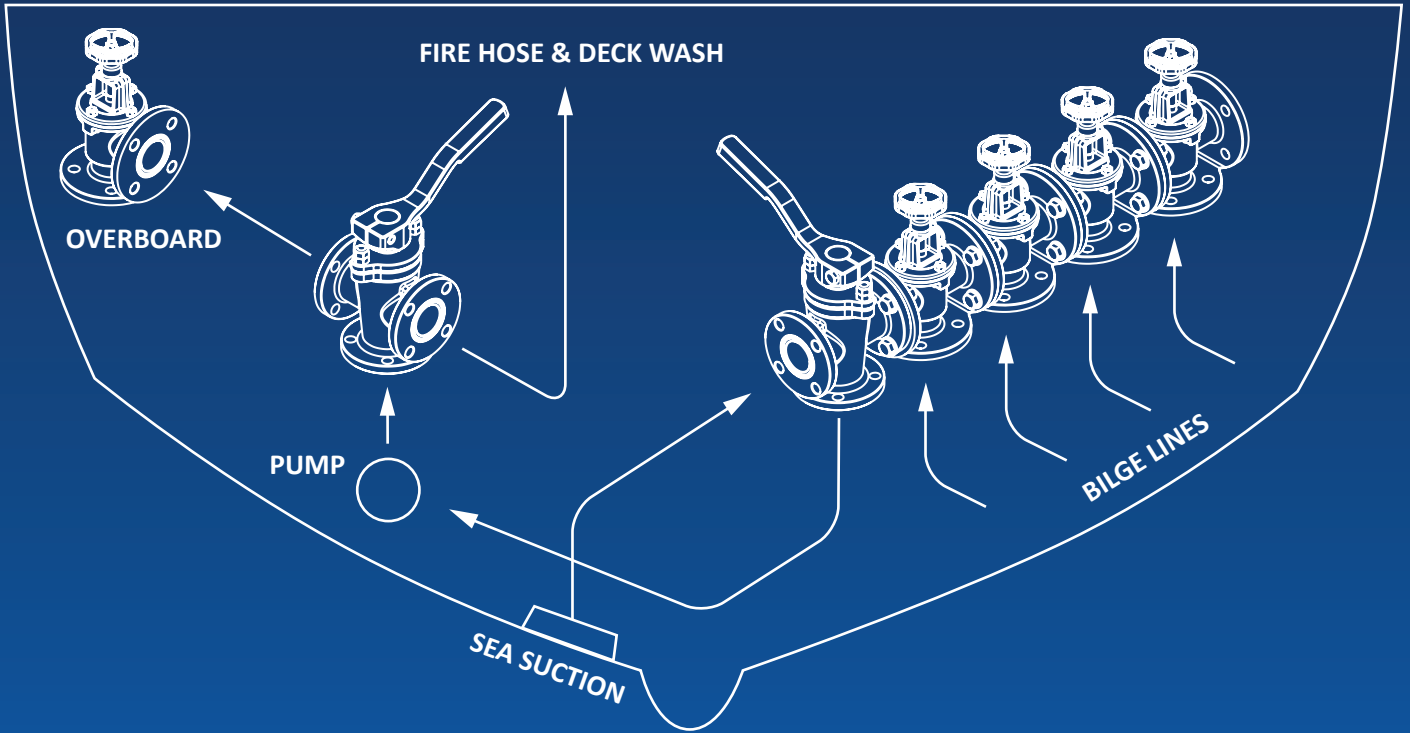
50mm T.E. Flange

Weight 11 kg  
Dimensions 185mm x 285mm

**SL50-ISDNV**



## Typical Installation Diagram



**White Star Products** LP



58 frost Road  
Mt Roskill, Auckland  
New Zealand  
PO Box 27 202  
Mt Roskill 1440

P +64 9 620 7109  
F +64 9 620 7086

[sales@whitestarproducts.co.nz](mailto:sales@whitestarproducts.co.nz)



Photo: Adagio 72 courtesy of Diverse Projects NZ

[www.whitestarproducts.co.nz](http://www.whitestarproducts.co.nz)

SL0710